

TECHNICAL SERVICE BULLETIN

To: All Powerboss Dealers and Service Managers

From: PowerBoss Technical Support

Date: July 27, 2015

Subject: Kubota 1605 Exhaust Manifold Required Update

Reason for Change

It has been noted a few units were produced with the exhaust manifold made of an incorrect material and may crack under the heat produced by the exhaust of LPG and GAS.

Models/Serial Numbers Affected

To whom it may concern,

The machines and engines listed in the packing list require an updated manifold be installed within 60 days. PowerBoss will pay a flat rate of \$142.50 USD to complete the update. Prior to receiving a credit note from PowerBoss you must take a picture of the new manifold installed on the engine and complete a warranty claim form with detail.

Please follow the attached instructions and contact PowerBoss Technical Support with any questions.

Machine Model:

Machine Serial Number:

Engine Serial Number:

Meter Reading (hours):

Best Regards,

Please check the kit, **K-WG1605MAN**; to be sure all of the necessary parts are included. See the parts list and the photograph below.

1, EG523-12312 (3344880)	Exhaust Manifold
1, EG523-12350 (3345080)	Exhaust Manifold Gasket
1, EG523-12230 (3345082)	Exhaust Manifold Flange Gasket
4, 1J500-91550 (3344884)	M8X23 Stud
4, M8-1.25MN (811031)	Metric nut zinc
4, M8LW (811032)	Metric 8 LW Zinc
1, WIRE120 (811033)	10 feet Stainless Steel Lock Wire



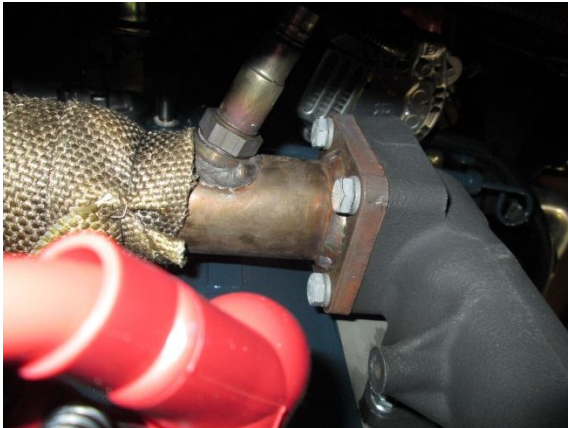
1. Raise the hopper and secure it with the safety bars.
2. Remove ground cable from negative battery terminal before beginning. If needed, small access panel behind the parking brake lever can be removed.



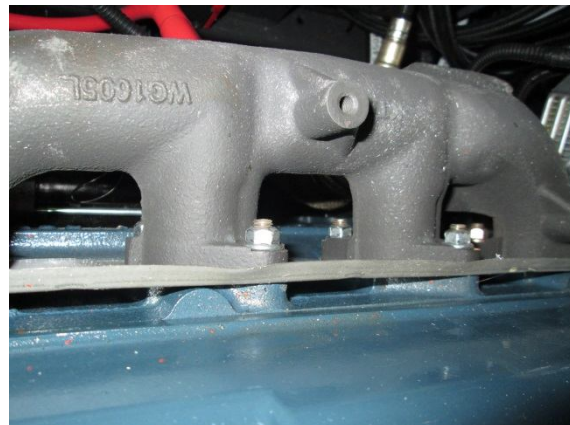
3. Cut safety wire securing blanket to manifold and remove blanket. Note the position of the wire for reassembly.



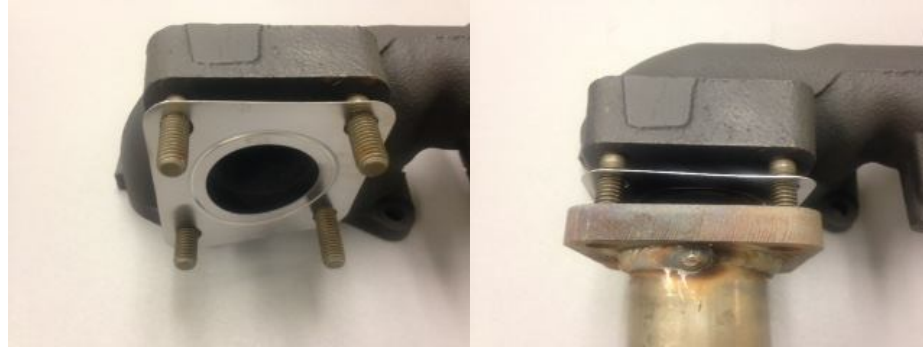
4. Remove 4 bolts connecting exhaust pipe flange to exhaust manifold flange. Discard these bolts as they are no longer needed. Photograph on the right shows the new manifold with the studs and gasket installed.



5. Remove 4 nuts on topside, 4 nuts on bottom side of manifold. Save and reuse these nuts on the new exhaust manifold installation.



6. Manifold is ready to be removed and replaced. Replacement is pretty much the reverse order of the disassembly procedure.
7. Start the 4 manifold outlet studs along with the new manifold outlet gasket into the header pipe. Thread the new supplied nuts with lock washers to the outlet studs. Do not tighten yet.



8. Replace the exhaust manifold to engine gasket with the new supplied gasket.
9. Install and tighten the original eight nuts to secure the exhaust manifold to the cylinder head. Tighten to 13 Ft/lbs.
10. Tighten the 4 nuts to secure the exhaust pipe flange to the exhaust outlet on the manifold. Tighten to 25 Ft/lbs.

11. Replace and tightly lace the exhaust manifold blanket to the exhaust manifold. Lace Bottom to top as removed earlier. Refer to the photos below. Be sure the blanket is tightly pulled between the exhaust manifold tubes and tied tightly around the exhaust manifold outlet flange to pipe connection. Use the supplied stainless steel lacing wire.



12. Check your work for any loose fasteners. Check for loose or chafing hoses or electrical wiring components. Replace the battery negative cable and test run the engine. Check for exhaust leaks.
13. Replace the access cover over the battery negative cable.
14. Make one overall final check of the machine.

The hydraulic hoses and wiring **MUST** be a minimum of 2" away from the exhaust system including the blanket, wrap, manifold, and pipes.